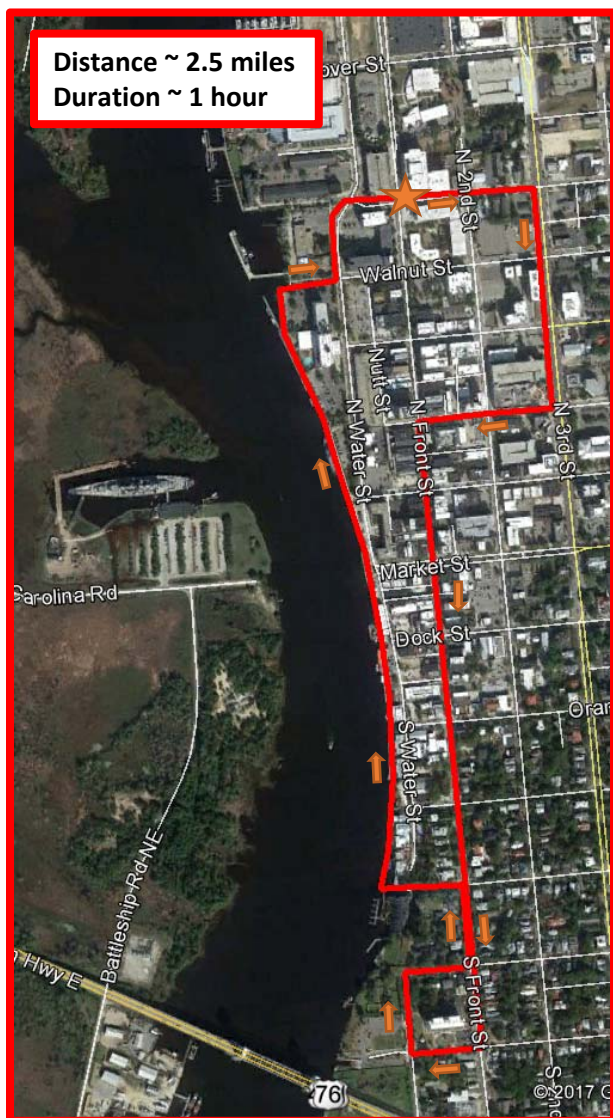




DOWNTOWN WALKING TOUR – SELF GUIDED

This 2.5-mile self-guided walking tour of downtown Wilmington combines a look at historic sites with modern pedestrian safety accommodations.



- The tour starts at Cape Fear Community College and heads east to the 3rd Street corridor. Through recent streetscape and signal retiming efforts, the corridor features buffered sidewalks, short signal cycle lengths and pedestrian push-buttons.
- After walking south for three blocks on 3rd Street, the tour heads west to Front Street. Check out the new pedestrian signal heads at 2nd and Chestnut.
- Once on Front Street, the tour heads south through historic downtown Wilmington, along a converted corridor that accommodates two-way traffic, a shared bikeway, and wide sidewalks with street cafes and restaurants.
- Along Front Street, the tour passes by several historic sites, and ultimately ends up at Dram Tree Park at the foot of the Memorial Bridge. During colonial days, the tree here signaled the end of a voyage and the sailors were allowed to have a dram of rum or whiskey.
- The tour then heads back north and turns on Nun Street towards the Riverwalk – voted America’s #1 Riverwalk! As part of the Riverwalk, the tours passes through recently re-opened Water Street, which now houses weekly Farmer’s markets and other events.
- The tour also passes the former Water Street parking deck, which is being re-developed into an urban mixed-used development.
- The tour eventually turns back east and takes Red Cross Street back to the starting point.

COMPLETING OUR STREETS
...for ALL!

6th Annual NC Bike/Walk Summit